

Community Health Assessment Resource Tool Set

That is CHARTS!

QUICK FACTS

Single health-related data source

FLHealthCHARTS is a single source for health-related data that comes from many different programs and agencies.

Over 4,600 health indicators

Most data are updated annually, but some are updated quarterly. Query systems are updated daily with current, provisional vital statistics.

Identifies local health issues

FLHealthCHARTS helps communities get data they need to identify local health issues and develop community health plans.

Helpful features

Include tutorials and a search box to help you get started on CHARTS.

Data notes and sources

Relative information is provided at the bottom of the page for each indicator, and data can be exported to Microsoft Excel.

Stay up-to-date

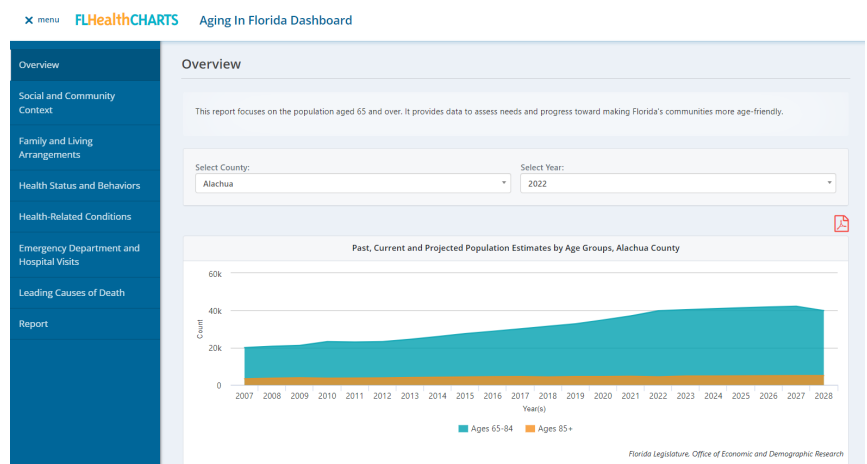
Create an account to set a preferred county and receive a monthly email about the latest updates.

Profiles and Dashboard Reports

View a profile or dashboard report to see a collection of data about a health topic with just one click.

Some examples are:

- Health Summaries – reports that help assess a county's overall health status by providing data about a wide range of topics.
- Injuries - reports that focus on intentional and unintentional injuries, by mechanism.
- Social and Behavioral Health – reports that address substance use, suicide and health behaviors.
- Specific Focus – reports that focus on a particular health topic such as aging, asthma, child health, birth defects, oral health and more.

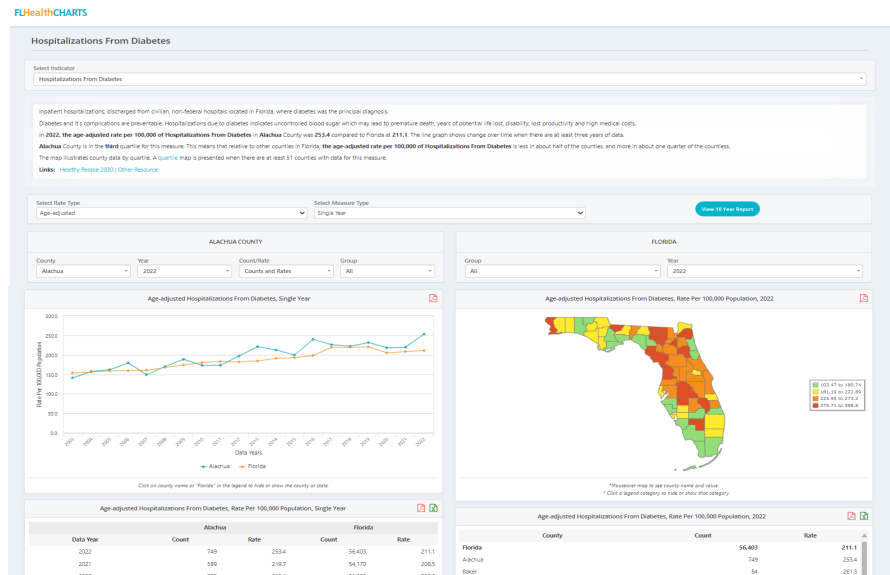


Health Indicators

Obtain specific health data featuring definitions, data notes and helpful links. Customize the view by selecting specific ages, races or ethnicity groups. Understand a county's relative ranking using quartile comparisons to other Florida counties. View state and county data side by side. Options vary by indicator.

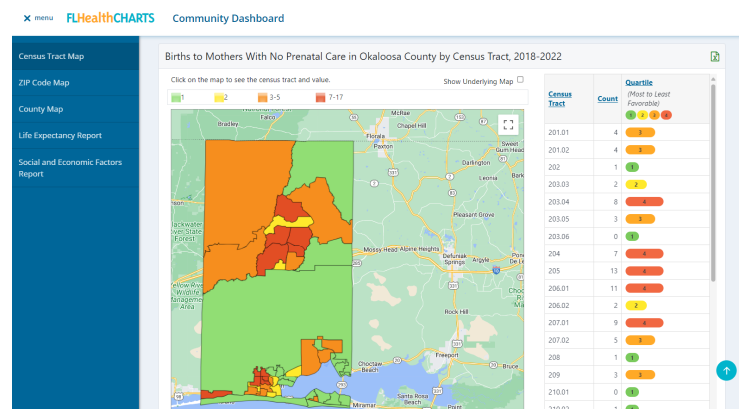
Some features are:

- Indicator description, data, and helpful links
- Change the measure type (single, 3 year discrete, etc.)
- Select specific ages
- View a 10-year report
- Select a county
- Select a race and/or ethnicity group
- Export as an Excel or CSV
- Find out more about the indicator



Community Dashboard

The Community Dashboard provides census tract, ZIP code, and county level data about births, deaths, and social and economic factors impacting health. Compare data within the map, Life Expectancy Report, and Social and Economic Factors Report.



FLHealthCHARTS - Death Rates Query System

Standard Reports: Resident AADR by Residence County by Year

Pivotable Field List:

- Measures
 - 113 Causes of Death
 - 104 Causes of Death
 - Age
 - Decedent's Disposition
 - Ethnicity
 - Military Veteran
 - Resident County
- Filters
 - None
 - Leading Causes of Death
- Columns
 - Measures
 - Resident AADR

Resident AADR by Leading Causes of Death by Year

Leading Causes of Death	2013	2014	2015	2016	2017	2018	2019	2020	2021	2022
ACUTE BRONCHITIS AND BRONCHITIS (500-519)	0	0	1	1	0	0	1	0	0	0
ALZHEIMER'S DISEASE (500-509)	172	162	224	222	210	200	183	203	161	163
ANEMIAS (500-509)	12	14	13	14	14	13	14	15	14	16
AORTIC ANEURYSM AND DISSECTION (571)	29	29	29	22	23	21	21	21	22	22
APPENDICITIS (580-589)	1	1	1	1	1	1	1	1	1	1
ARTHRITIS (590-599)	0	0	0	0	0	0	0	0	0	0
ATHEROSCLEROSIS (590-599)	21	20	18	15	13	11	11	15	11	10
CEREBROVASCULAR DISEASES (590-599)	317	304	361	365	365	410	414	444	457	476
CHOLELITHIASIS AND OTHER GALLBLADDER DISORDERS (580-589)	7	7	7	8	7	7	8	7	8	9
CHRONIC LIVER DISEASE AND CIRRHOSIS (570-579)	108	119	118	122	114	120	113	130	135	129
CHRONIC LOWER RESPIRATORY DISEASE (480-489)	410	380	384	383	400	384	381	343	307	318
CONGENITAL MALFORMATIONS, DEFORMATIONS AND CHROMOSOMAL ABNORMALITIES (200-209)	28	28	28	31	29	28	30	28	28	21
COVID-19 (500-509)	0	0	0	0	0	0	0	0	0	0
DIABETES MELLITUS (250-259)	194	194	191	201	207	204	197	202	242	228
INTERSCUTIS DUE TO CLOSTRIDIUM DIFFICILE (580-589)	18	18	17	15	14	13	8	6	7	7

Query Systems

Build a custom report with query systems. Birth, death, infant death, fetal death, marriage, marriage dissolution, population estimate, and reportable disease query systems are available. Provisional data is updated each day.