

# FLHealthCHARTS

## Health Indicator Viewers

---

DIVISION OF PUBLIC HEALTH STATISTICS AND  
PERFORMANCE MANAGEMENT

BUREAU OF COMMUNITY HEALTH ASSESSMENT



# Health Indicator Viewers

1 click, 4 views!

Trends

trend graph

trend data

Specific Year

quartile map

data table

[indicator info](#)

Indicator	Year	Measure Type	10-Year report	Help
Infant Deaths	2014	3-Year Rolling	<a href="#">View 10 year report</a>	<a href="#">View help</a> <a href="#">More death indicators</a>

---

**Alachua**

Change County: Alachua

Change grouping: All

Change count/rate display: Counts and rates

[save](#) [print](#) [print preview \(view larger\)](#)

**Infant Deaths Per 1,000 Live Births, 3-Year Rolling Rates**

Show/Hide County   
  Show/Hide State

**Florida**

Change map grouping: All Race

Change map year: 2014

[save](#) [print](#) [print preview \(view larger\)](#)

**Infant Deaths Per 1,000 Live Births, 3-Year Rolling Rates, 2012-14**

Mouseover counties to see values

---

Infant Deaths Per 1,000 Live Births, 3-Year Rolling Rates				
Years	Alachua Count	Alachua Rate	Florida Count	Florida Rate
1993-95	82	10.7	4,596	8.0
1994-96	73	9.9	4,347	7.6
1995-97	63	8.5	4,165	7.3
1996-98	80	10.8	4,178	7.2
1997-99	73	10.0	4,216	7.2
1998-00	81	10.9	4,281	7.2
1999-01	68	9.1	4,361	7.2
2000-02	81	10.8	4,466	7.3
2001-03	87	11.8	4,627	7.4

---

Infant Deaths Per 1,000 Live Births, 3-Year Rolling Rates, 2012-14		
County	Count	Rate
<b>Florida</b>	<b>3,930</b>	<b>6.1</b>
Alachua	76	8.8
Baker	10	9.5
Bay	60	8.7
Bradford	12	13.2
Brevard	97	6.3
Broward	336	5.2
Calhoun	1	2.4
Charlotte	8	2.6
Citrus	18	5.8

# Top selections control the whole page

- Indicator
- Year
- Measure type

## Infant Deaths

indicator info

**Indicator** Infant Deaths

**Year** 2014

**Measure Type** 3-Year Rolling

**10-Year report** [View 10 year report](#) [View help](#) [More death indicators](#)

---

**Alachua**

Change County:

Change grouping:

Change count/rate display:

[save](#) [print](#) [print preview \(view larger\)](#)

**Infant Deaths Per 1,000 Live Births, 3-Year Rolling Rates**

Show/Hide County  Show/Hide State

**Florida**

Change map grouping:

Change map year:

[save](#) [print](#) [print preview \(view larger\)](#)

**Infant Deaths Per 1,000 Live Births, 3-Year Rolling Rates, 2012-14**

Mouseover counties to see values

---

[print](#) [print preview](#) [export](#)


Infant Deaths Per 1,000 Live Births 3-Year Rolling Rates				
	Alachua		Florida	
Years	Count	Rate	Count	Rate
1993-95	82	10.7	4,596	8.0
1994-96	73	9.9	4,347	7.6
1995-97	63	8.5	4,165	7.3
1996-98	80	10.8	4,178	7.2
1997-99	73	10.0	4,216	7.2
1998-00	81	10.9	4,281	7.2
1999-01	68	9.1	4,361	7.2
2000-02	81	10.8	4,466	7.3
2001-03	87	11.8	4,627	7.4

[print](#) [print preview](#) [export](#) Sort by: --Select--

Infant Deaths Per 1,000 Live Births, 3-Year Rolling Rates, 2012-14		
County	Count	Rate
<b>Florida</b>	<b>3,930</b>	<b>6.1</b>
Alachua	76	8.8
Baker	10	9.5
Bay	60	8.7
Bradford	12	13.2
Brevard	97	6.3
Broward	336	5.2
Calhoun	1	2.4
Charlotte	8	2.6
Citrus	18	5.8

# Helpful links

- 10-year report
- Help document
- More indicators
- Indicator info
- Return to CHARTS homepage

indicator info 

## Infant Deaths

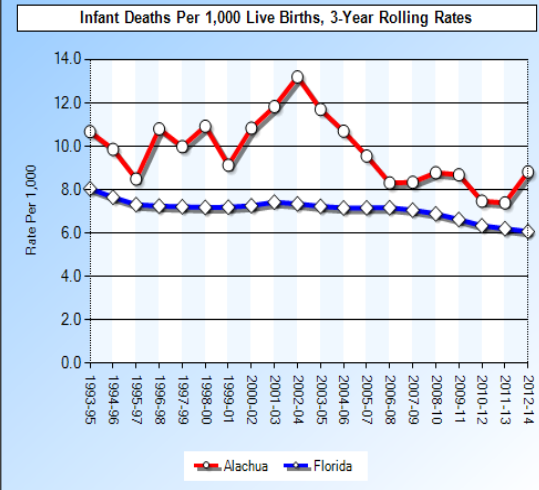
10-Year report Help  
[View 10 year report](#) [View help](#) [More death indicators](#)

Indicator: Infant Deaths | Year: 2014 | Measure: 3-Year Rolling Rates

**Alachua**

Change County:  | Change grouping:  | Change count/rate display:

[save](#) [print](#) [print preview \(view larger\)](#)

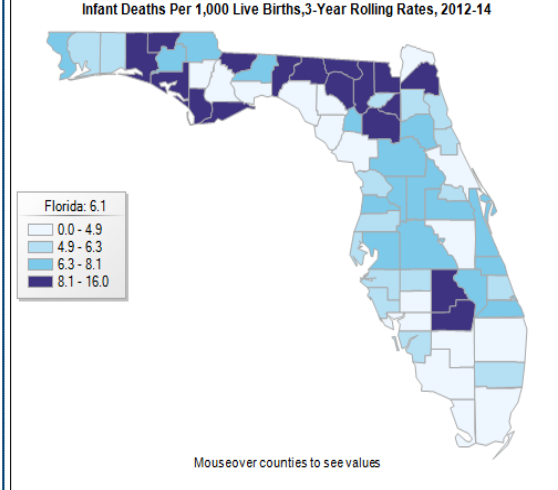


Show/Hide County     Show/Hide State

**Florida**

Change map grouping:  | Change map year:

[save](#) [print](#) [print preview \(view larger\)](#)



Mouseover counties to see values

[print](#) [print preview](#) [export](#)

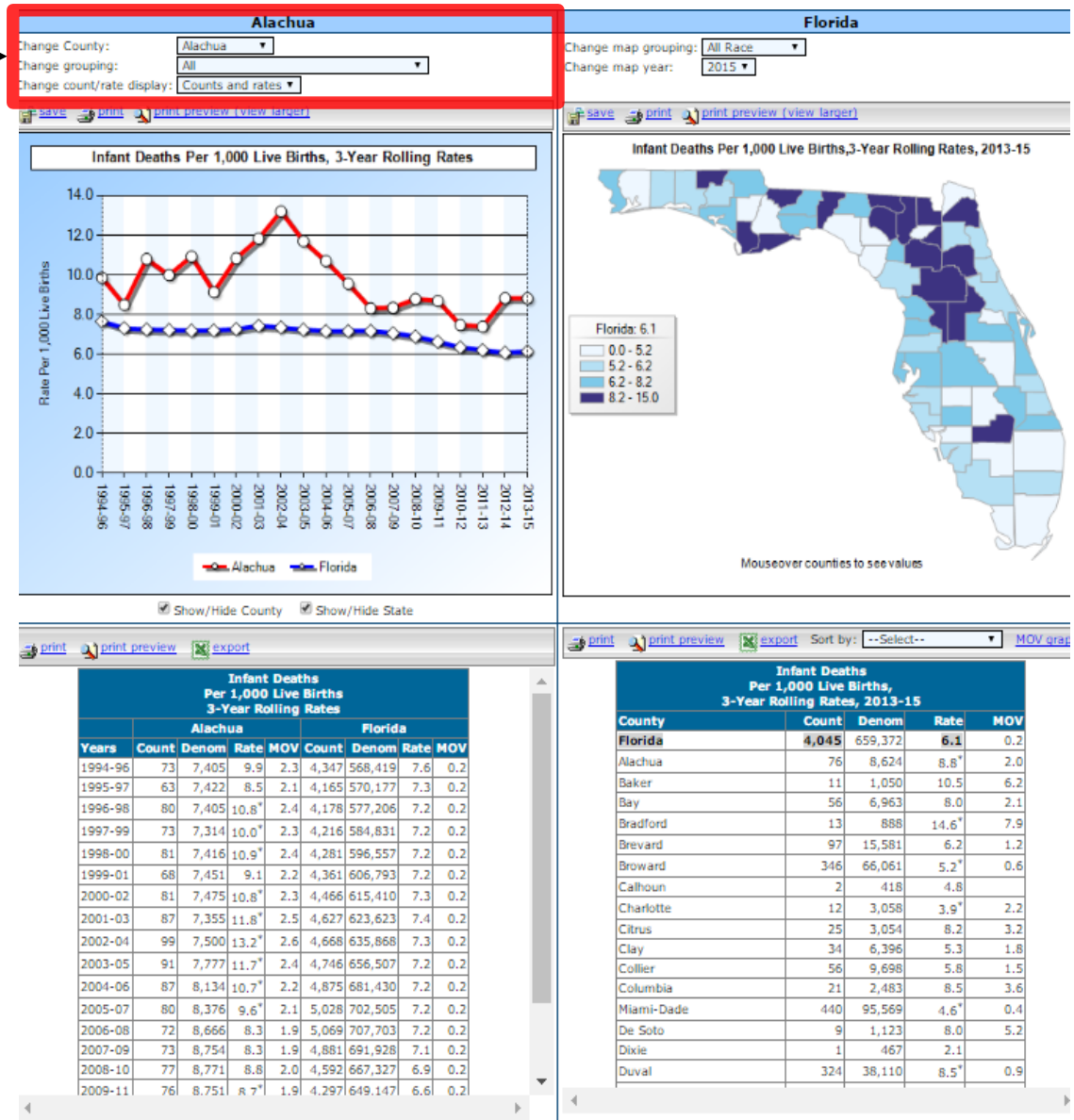
Infant Deaths Per 1,000 Live Births 3-Year Rolling Rates				
Years	Alachua		Florida	
	Count	Rate	Count	Rate
1993-95	82	10.7	4,596	8.0
1994-96	73	9.9	4,347	7.6
1995-97	63	8.5	4,165	7.3
1996-98	80	10.8	4,178	7.2
1997-99	73	10.0	4,216	7.2
1998-00	81	10.9	4,281	7.2
1999-01	68	9.1	4,361	7.2
2000-02	81	10.8	4,466	7.3
2001-03	87	11.8	4,627	7.4

[print](#) [print preview](#) [export](#) Sort by: --Select--

Infant Deaths Per 1,000 Live Births, 3-Year Rolling Rates, 2012-14		
County	Count	Rate
<b>Florida</b>	<b>3,930</b>	<b>6.1</b>
Alachua	76	8.8
Baker	10	9.5
Bay	60	8.7
Bradford	12	13.2
Brevard	97	6.3
Broward	336	5.2
Calhoun	1	2.4
Charlotte	8	2.6
Citrus	18	5.8

# Selections for trends effect the left side

- County
- Grouping = race/ethnicity options
- Display counts and rates, counts only, or rates only



FloridaCHARTS.com is provided by the Florida Department of Health, Division of Public Health Statistics & Performance Management.

12/7/2016 9:33 AM

Data Source: Florida Department of Health, Bureau of Vital Statistics

Data Note(s):

- Deaths occurring within 364 days of birth.
- Chart will display if there are at least three years of data.
- Multi-year counts are a sum of the selected years, not an average.
- Use caution when interpreting rates and ratios based on small numbers of events. Rates and ratios are considered unstable if they are based on fewer than 5 cases or if the denominator (population at risk) is fewer than 20. An erratic trend line illustrates this instability.
- Overall count/rate/ratio stability is based on 5-year rolling averages.

# Control the right side view with display options

- Grouping = race/ethnicity options
- Year

**Alachua**
**Florida**

Change County:

Change grouping:

Change count/rate/display:

[save](#) [print](#) [print preview \(view larger\)](#)

Change map grouping:

Change map year:

### Infant Deaths Per 1,000 Live Births, 3-Year Rolling Rates

Show/Hide County   
  Show/Hide State

### Infant Deaths Per 1,000 Live Births, 3-Year Rolling Rates, 2013-15

Mouseover counties to see values

[print](#) [print preview](#) [export](#)

Infant Deaths Per 1,000 Live Births 3-Year Rolling Rates									
Years	Alachua				Florida				MOV
	Count	Denom	Rate	MOV	Count	Denom	Rate	MOV	
1994-96	73	7,405	9.9	2.3	4,347	568,419	7.6	0.2	
1995-97	63	7,422	8.5	2.1	4,165	570,177	7.3	0.2	
1996-98	80	7,405	10.8*	2.4	4,178	577,206	7.2	0.2	
1997-99	73	7,314	10.0*	2.3	4,216	584,831	7.2	0.2	
1998-00	81	7,416	10.9*	2.4	4,281	596,557	7.2	0.2	
1999-01	68	7,451	9.1	2.2	4,361	606,793	7.2	0.2	
2000-02	81	7,475	10.8*	2.3	4,466	615,410	7.3	0.2	
2001-03	87	7,355	11.8*	2.5	4,627	623,623	7.4	0.2	
2002-04	99	7,500	13.2*	2.6	4,668	635,868	7.3	0.2	
2003-05	91	7,777	11.7*	2.4	4,746	656,507	7.2	0.2	
2004-06	87	8,134	10.7*	2.2	4,875	681,430	7.2	0.2	
2005-07	80	8,376	9.6*	2.1	5,028	702,505	7.2	0.2	
2006-08	72	8,666	8.3	1.9	5,069	707,703	7.2	0.2	
2007-09	73	8,754	8.3	1.9	4,881	691,928	7.1	0.2	
2008-10	77	8,771	8.8	2.0	4,592	667,327	6.9	0.2	
2009-11	76	8,751	8.7*	1.9	4,297	649,147	6.6	0.2	

[print](#) [print preview](#) [export](#) Sort by: --Select-- [MOV](#) [graph](#)

Infant Deaths Per 1,000 Live Births, 3-Year Rolling Rates, 2013-15				
County	Count	Denom	Rate	MOV
<b>Florida</b>	<b>4,045</b>	<b>659,372</b>	<b>6.1</b>	<b>0.2</b>
Alachua	76	8,624	8.8*	2.0
Baker	11	1,050	10.5	6.2
Bay	56	6,963	8.0	2.1
Bradford	13	888	14.6*	7.9
Brevard	97	15,581	6.2	1.2
Broward	346	66,061	5.2*	0.6
Calhoun	2	418	4.8	
Charlotte	12	3,058	3.9*	2.2
Citrus	25	3,054	8.2	3.2
Clay	34	6,396	5.3	1.8
Collier	56	9,698	5.8	1.5
Columbia	21	2,483	8.5	3.6
Miami-Dade	440	95,569	4.6*	0.4
De Soto	9	1,123	8.0	5.2
Dixie	1	467	2.1	
Duval	324	38,110	8.5*	0.9

FloridaCHARTS.com is provided by the Florida Department of Health, Division of Public Health Statistics & Performance Management.

12/7/2016 9:33 AM

**Data Source:** Florida Department of Health, Bureau of Vital Statistics

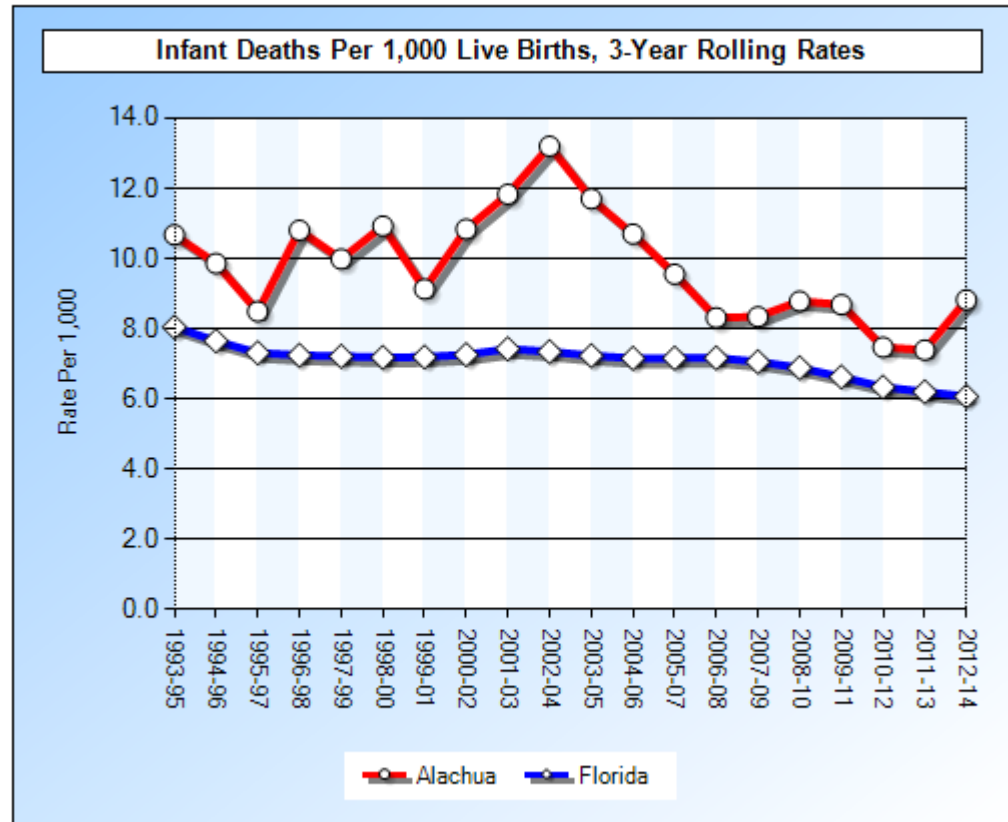
**Data Note(s):**

- Deaths occurring within 364 days of birth.
- Chart will display if there are at least three years of data.
- Multi-year counts are a sum of the selected years, not an average.
- Use caution when interpreting rates and ratios based on small numbers of events. Rates and ratios are considered unstable if they are based on fewer than 5 cases or if the denominator (population at risk) is fewer than 20. An erratic trend line illustrates this instability.

# Trend Graph Features

Save, print or print preview the graph

 [save](#)  [print](#)  [print preview \(view larger\)](#)



Show or hide a trend line by checking the boxes below the graph

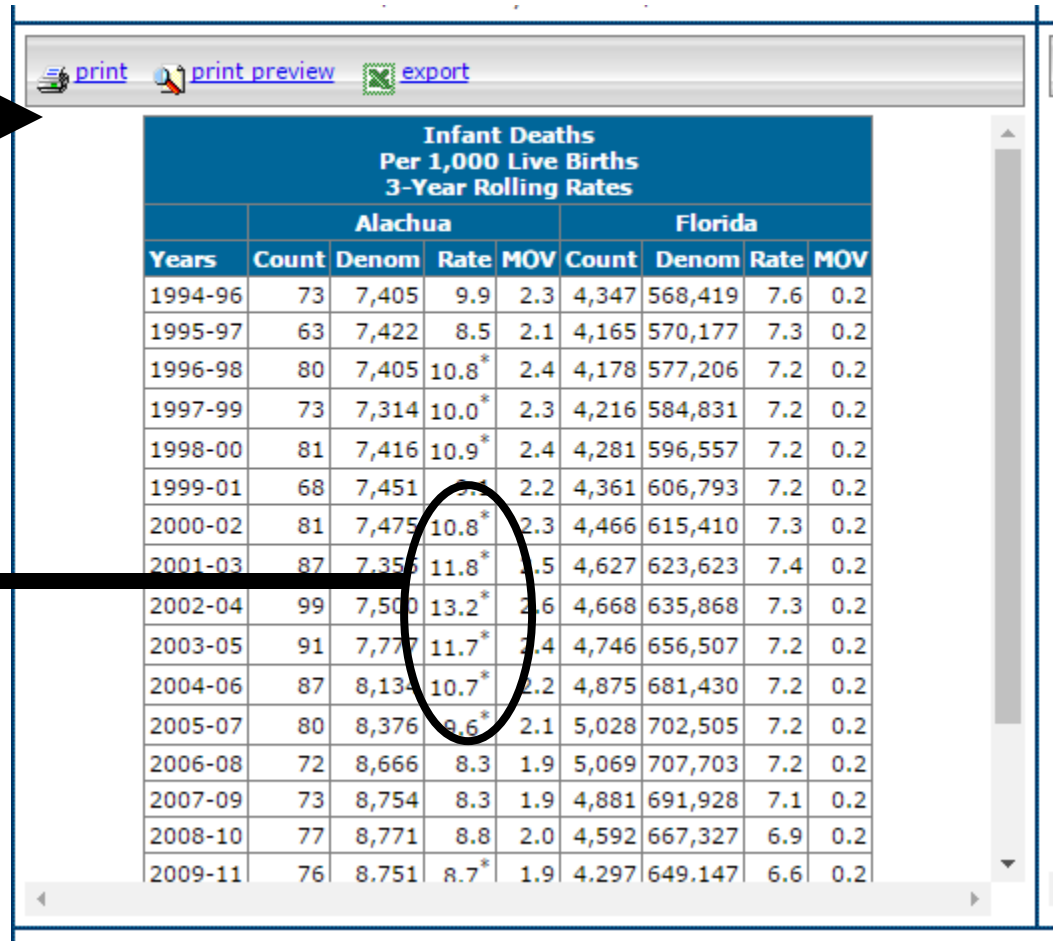
Show/Hide County  Show/Hide State

# Trend Data Table Features

Print or print preview the  
data table

Export data to excel

Rates followed by \* indicate  
the county rate is  
statistically different from  
the state's



The screenshot shows a web-based interface for a data table. At the top, there are three buttons: 'print', 'print preview', and 'export'. Below these is a table titled 'Infant Deaths Per 1,000 Live Births 3-Year Rolling Rates'. The table is divided into two main sections: 'Alachua' and 'Florida'. Each section has columns for 'Years', 'Count', 'Denom', 'Rate', and 'MOV'. The 'Rate' column for Alachua includes asterisks (\*) for the years 1996-98, 1997-99, 1998-00, 2000-02, 2001-03, 2002-04, 2003-05, 2004-06, and 2005-07. A black circle highlights the 'Rate' column for Alachua, and a black arrow points from the text 'Rates followed by \* indicate the county rate is statistically different from the state's' to this circle. Another black arrow points from the text 'Print or print preview the data table' to the 'print' and 'print preview' buttons.

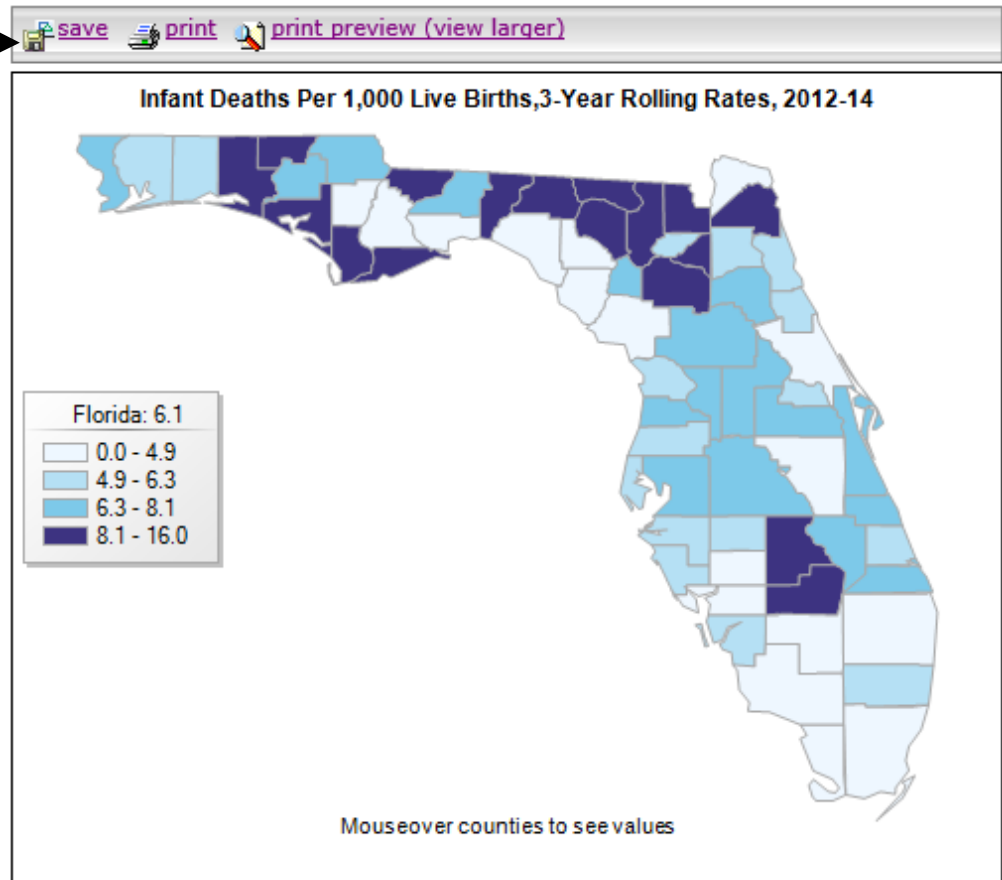
Infant Deaths Per 1,000 Live Births 3-Year Rolling Rates								
	Alachua				Florida			
Years	Count	Denom	Rate	MOV	Count	Denom	Rate	MOV
1994-96	73	7,405	9.9	2.3	4,347	568,419	7.6	0.2
1995-97	63	7,422	8.5	2.1	4,165	570,177	7.3	0.2
1996-98	80	7,405	10.8*	2.4	4,178	577,206	7.2	0.2
1997-99	73	7,314	10.0*	2.3	4,216	584,831	7.2	0.2
1998-00	81	7,416	10.9*	2.4	4,281	596,557	7.2	0.2
1999-01	68	7,451	9.1	2.2	4,361	606,793	7.2	0.2
2000-02	81	7,475	10.8*	2.3	4,466	615,410	7.3	0.2
2001-03	87	7,356	11.8*	2.5	4,627	623,623	7.4	0.2
2002-04	99	7,500	13.2*	2.6	4,668	635,868	7.3	0.2
2003-05	91	7,777	11.7*	2.4	4,746	656,507	7.2	0.2
2004-06	87	8,134	10.7*	2.2	4,875	681,430	7.2	0.2
2005-07	80	8,376	9.6*	2.1	5,028	702,505	7.2	0.2
2006-08	72	8,666	8.3	1.9	5,069	707,703	7.2	0.2
2007-09	73	8,754	8.3	1.9	4,881	691,928	7.1	0.2
2008-10	77	8,771	8.8	2.0	4,592	667,327	6.9	0.2
2009-11	76	8,751	8.7*	1.9	4,297	649,147	6.6	0.2



# Quartile Map Features

Save, print or print preview  
the map

Move your mouse over any  
county to see its numeric  
value

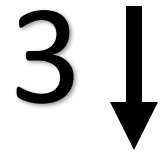


# Data Table Features

1 Save, print or print preview the data table

2 Sort by – ascending to descending or alphabetical county order

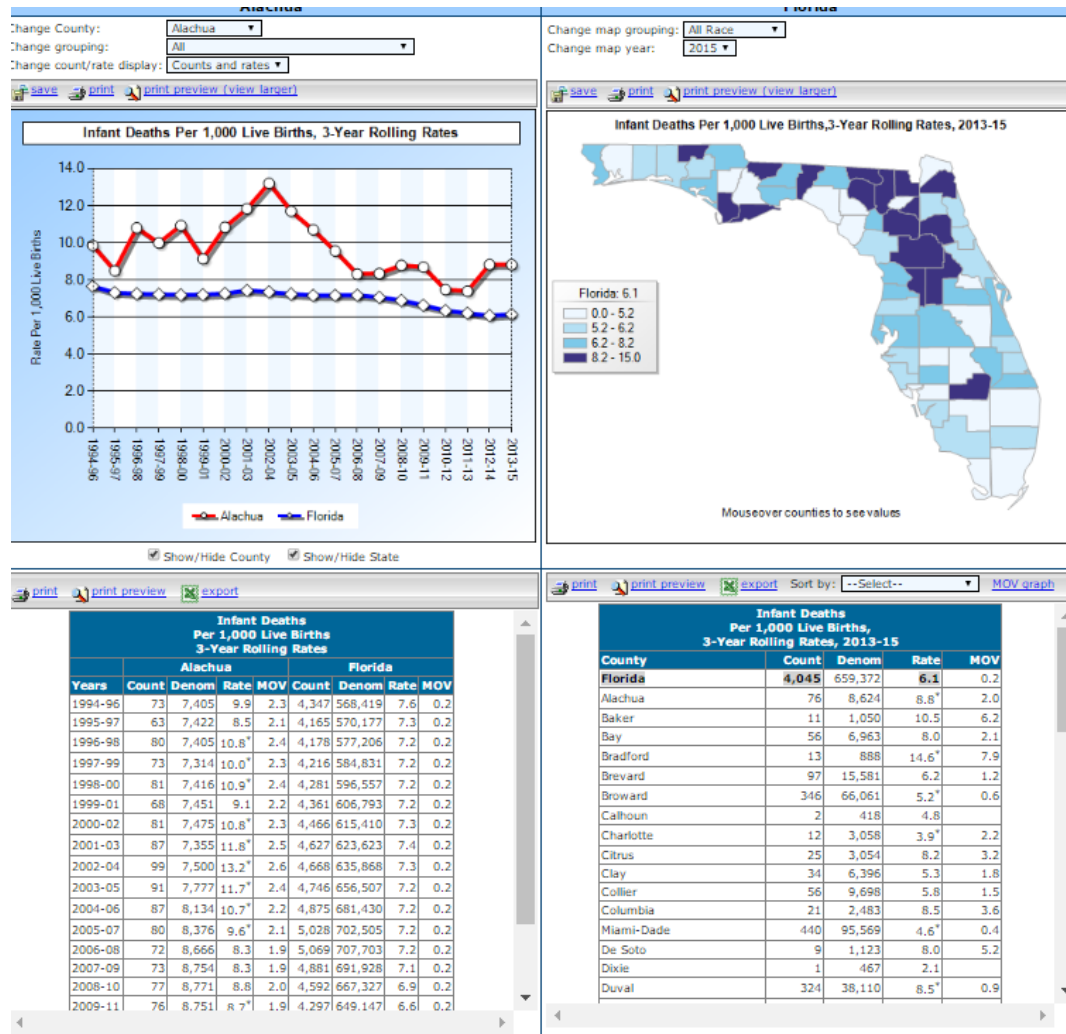
3 MOV graph displays state rate compared to county rates with measure of variability



Infant Deaths Per 1,000 Live Births, 3-Year Rolling Rates, 2013-15				
County	Count	Denom	Rate	MOV
Florida	4,045	659,372	6.1	0.2
Alachua	76	8,624	8.8 <sup>†</sup>	2.0
Baker	11	1,050	10.5	6.2
Bay	56	6,963	8.0	2.1
Bradford	13	888	14.6 <sup>†</sup>	7.9
Brevard	97	15,581	6.2	1.2
Broward	346	66,061	5.2 <sup>†</sup>	0.6
Calhoun	2	418	4.8	
Charlotte	12	3,058	3.9 <sup>†</sup>	2.2
Citrus	25	3,054	8.2	3.2
Clay	34	6,396	5.3	1.8
Collier	56	9,698	5.8	1.5
Columbia	21	2,483	8.5	3.6
Miami-Dade	440	95,569	4.6 <sup>†</sup>	0.4
De Soto	9	1,123	8.0	5.2
Dixie	1	467	2.1	
Duval	324	38,110	8.5 <sup>†</sup>	0.9

# Data Notes

See the data source and notes specific to the indicator at the bottom of the page



FloridaCHARTS.com is provided by the Florida Department of Health, Division of Public Health Statistics & Performance Management.

12/7/2016 9:33 AM

**Data Source:** Florida Department of Health, Bureau of Vital Statistics

**Data Note(s):**

- Deaths occurring within 364 days of birth.
- Chart will display if there are at least three years of data.
- Multi-year counts are a sum of the selected years, not an average.
- Use caution when interpreting rates and ratios based on small numbers of events. Rates and ratios are considered unstable if they are based on fewer than 5 cases or if the denominator (population at risk) is fewer than 20. An erratic trend line illustrates this instability.
- Quartiles are calculated when data is available for at least 51 counties.
- Data for 1970-78, 1979-98, and 1999-present are not fully comparable due to changes in coding causes of death. Consequently, increases or decreases in 1979 and 1999 may not be due to changes in disease trends but rather coding changes. Starting with 2003 deaths, the sum of the deaths from all counties will not equal the total number of resident deaths due to an unknown county of residence on some records.
- MOV - Measure of Variability: Probable range of values resulting from random fluctuations in the number of events. Not calculated when numerator is below 5 or denominator is below 20, or count or rate is suppressed. The MOV is useful for comparing rates to a goal or standard. For example, if the absolute difference between the county rate and the statewide rate is less than the MOV, the county rate is not significantly different from the statewide rate (alpha level = 0.05). When the absolute difference between the county rate and the statewide rate is greater than the MOV, the county rate is significantly different from the statewide rate. MOV should not be used to determine if the rates of two different counties, or the county rates for two different years, are statistically significantly different.
- Denom - abbreviated for Denominator.
- \* - Indicates the county rate is statistically significantly different from the statewide rate.