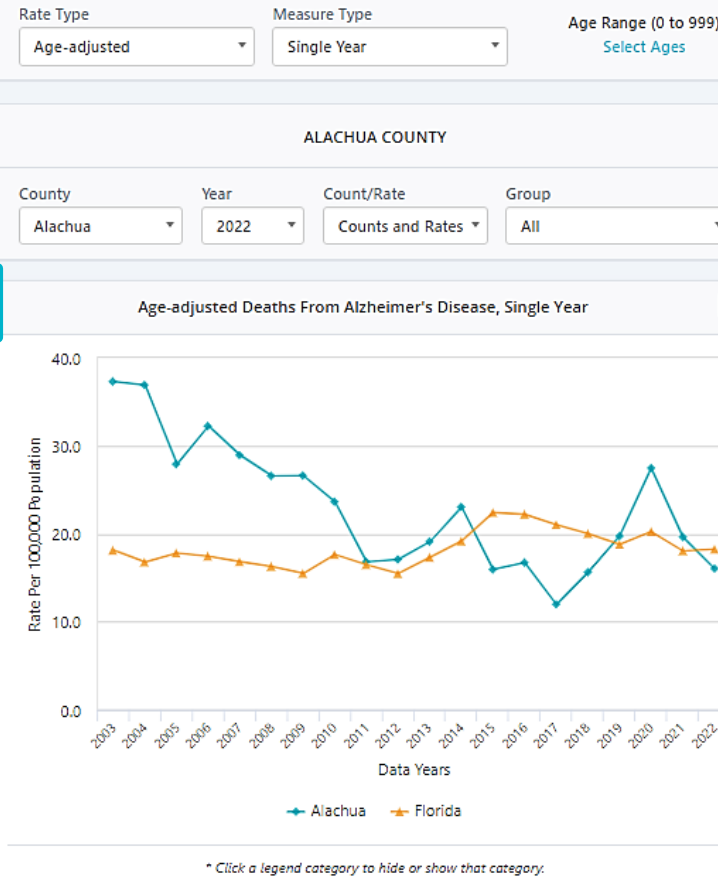


Tutorial: Health Indicator Pages

Health Indicator Page

1. County and state trend graph
2. County and state trend data table
3. County quartiles for all counties for a single year
4. County data for all counties for a single year

1

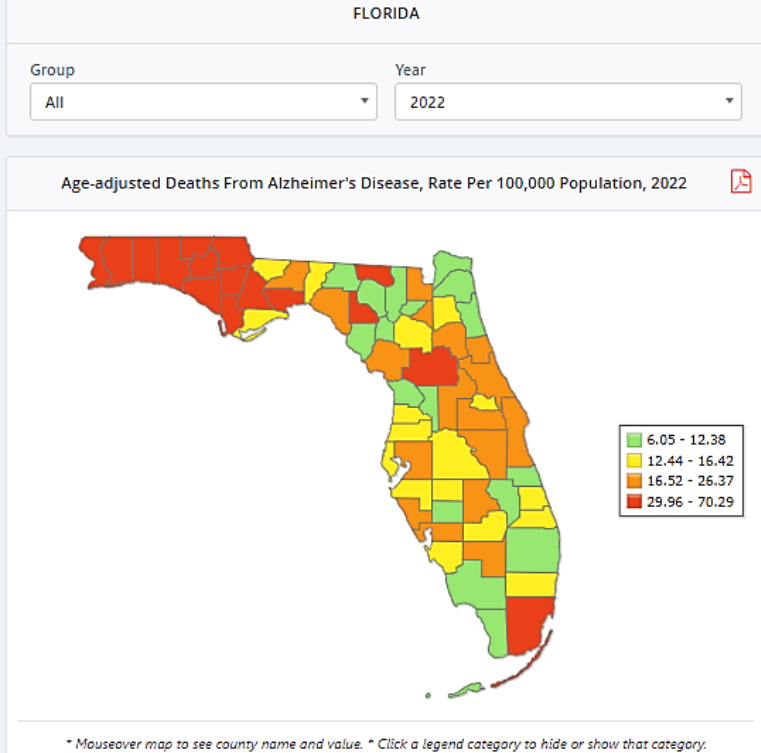


2

Age-adjusted Deaths From Alzheimer's Disease, Rate Per 100,000 Population, Single Year

	Alachua		Florida	
Data Year	Count	Rate	Count	Rate
2022	48	16.1	6,397	18.3
2021	58	19.6	6,707	18.1
2020	77	27.5	7,264	20.3

3



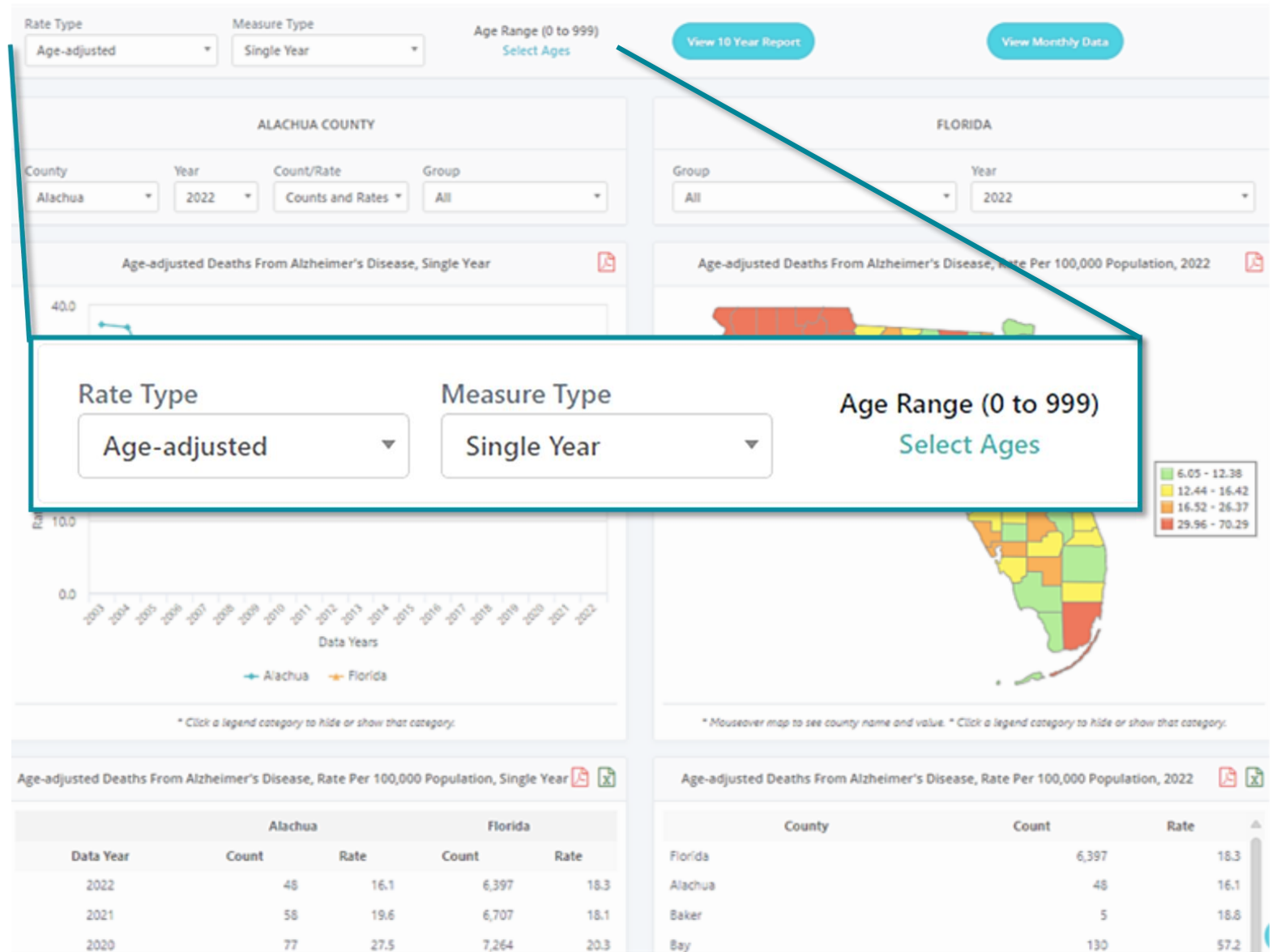
4

Age-adjusted Deaths From Alzheimer's Disease, Rate Per 100,000 Population, 2022

County	Count	Rate
Florida	6,397	18.3
Alachua	48	16.1
Baker	5	18.8
Bay	130	57.2

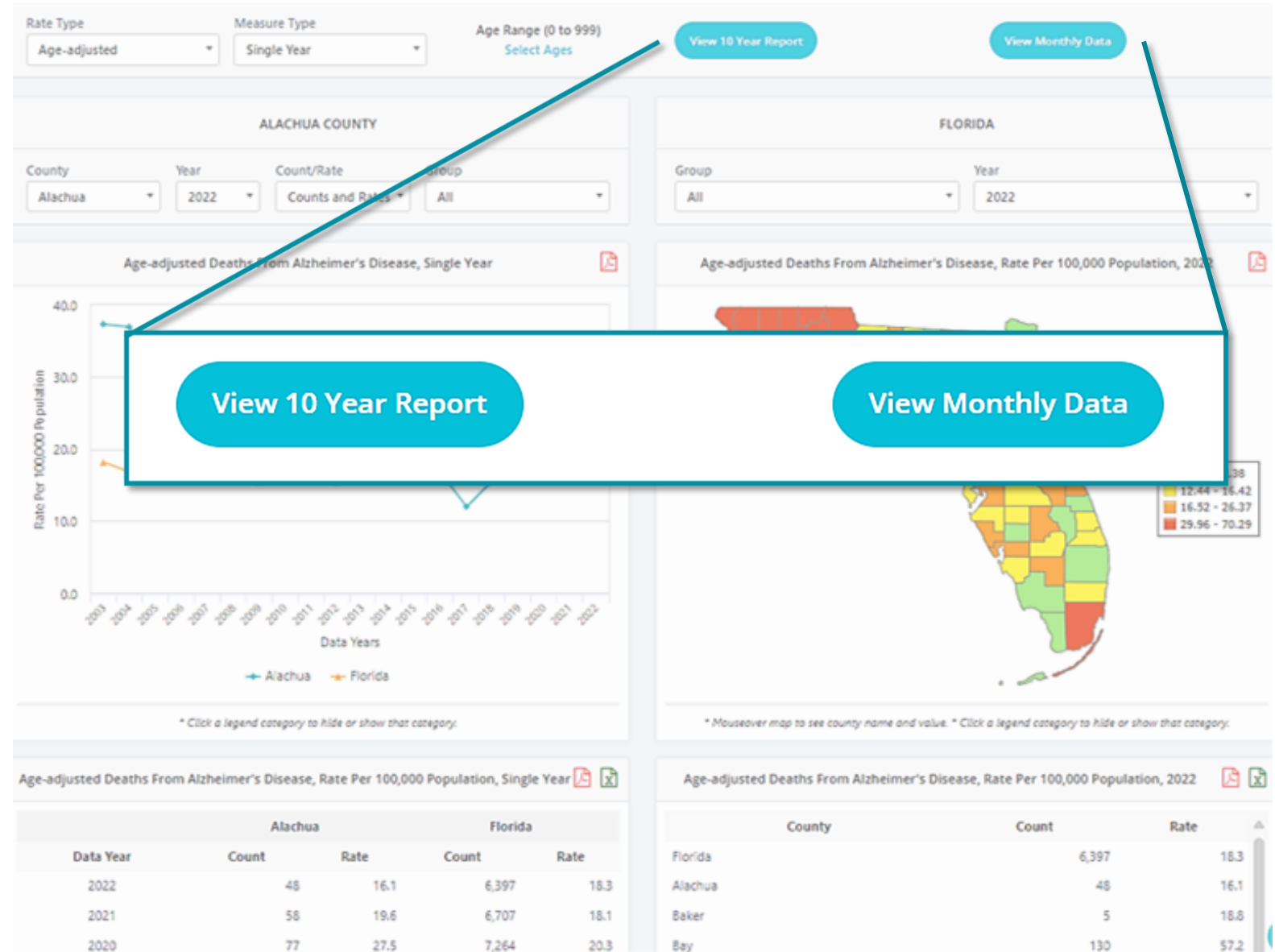
Selections at the top control the whole page and may vary based on data availability:

- Rate Type— crude, age-adjusted, or years of potential life lost (YPLL)
- Measure Type— single-year, 3-year discrete, or 3-year rolling
- Age Range



Additional data are available for birth and death indicators.

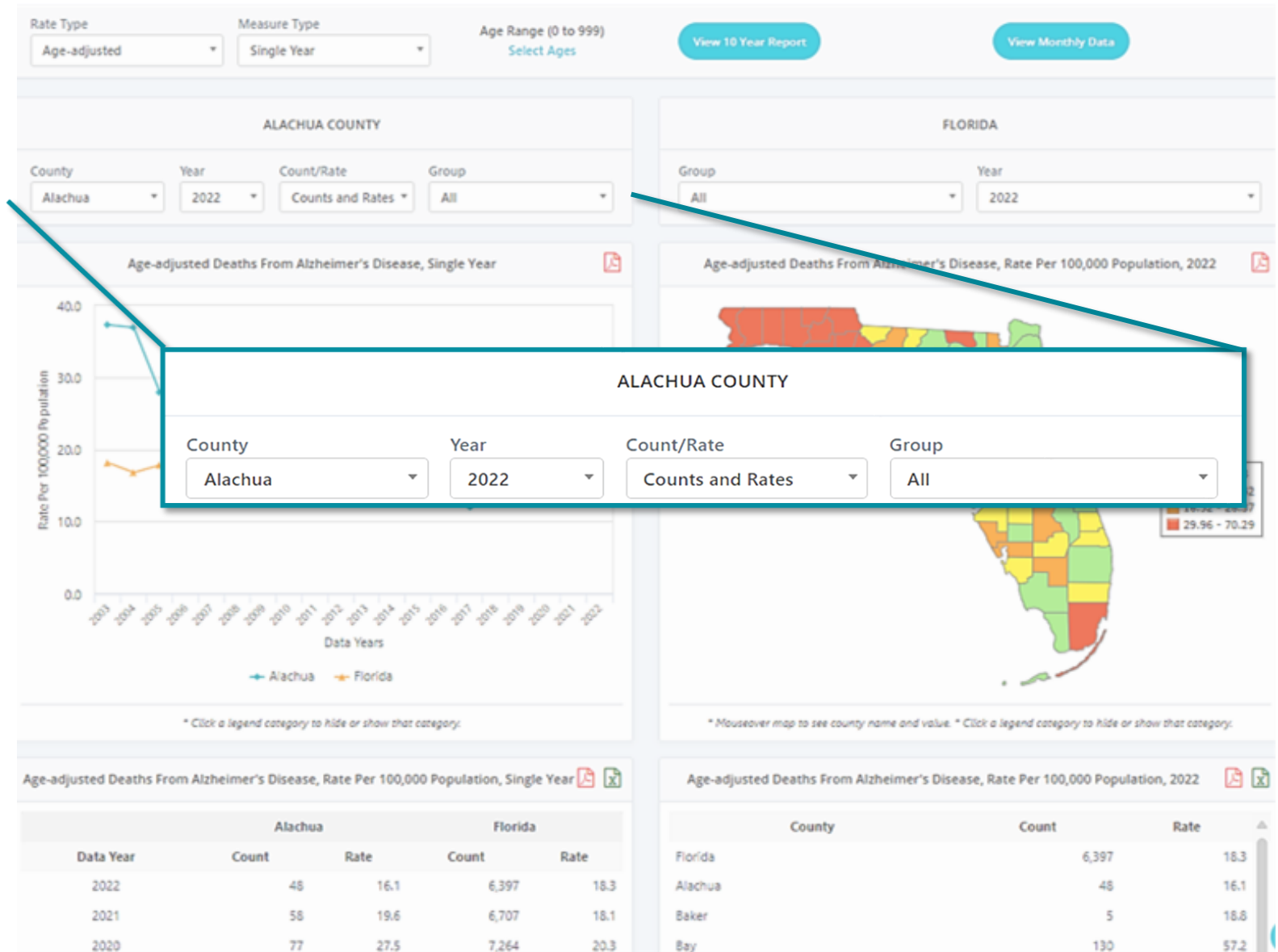
- Monthly Data— provides the most recent 36 months of data
- 10-Year Report



Left Panel Selections

Left panel selections affect the left side of the page and may vary based on data availability.

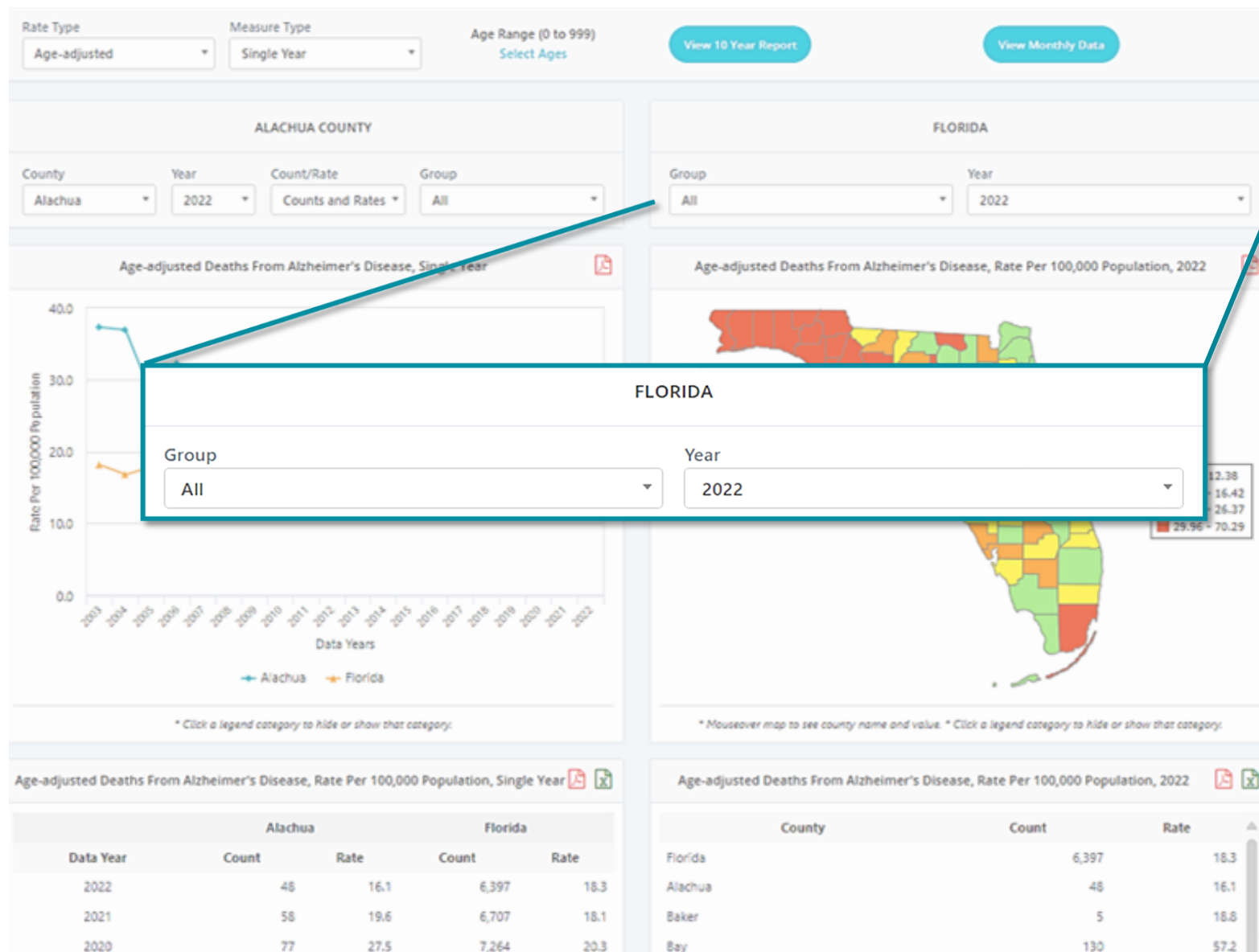
- County
- Year
- Count/Rate— display counts and rates, counts only, or rates only
- Group— shows race/ethnicity, gender, and other options depending on the indicator selected



Right Panel Selections

Right panel selections affect the right side of the page and may vary based on data availability.

- Group— shows race/ethnicity and gender options
- Year

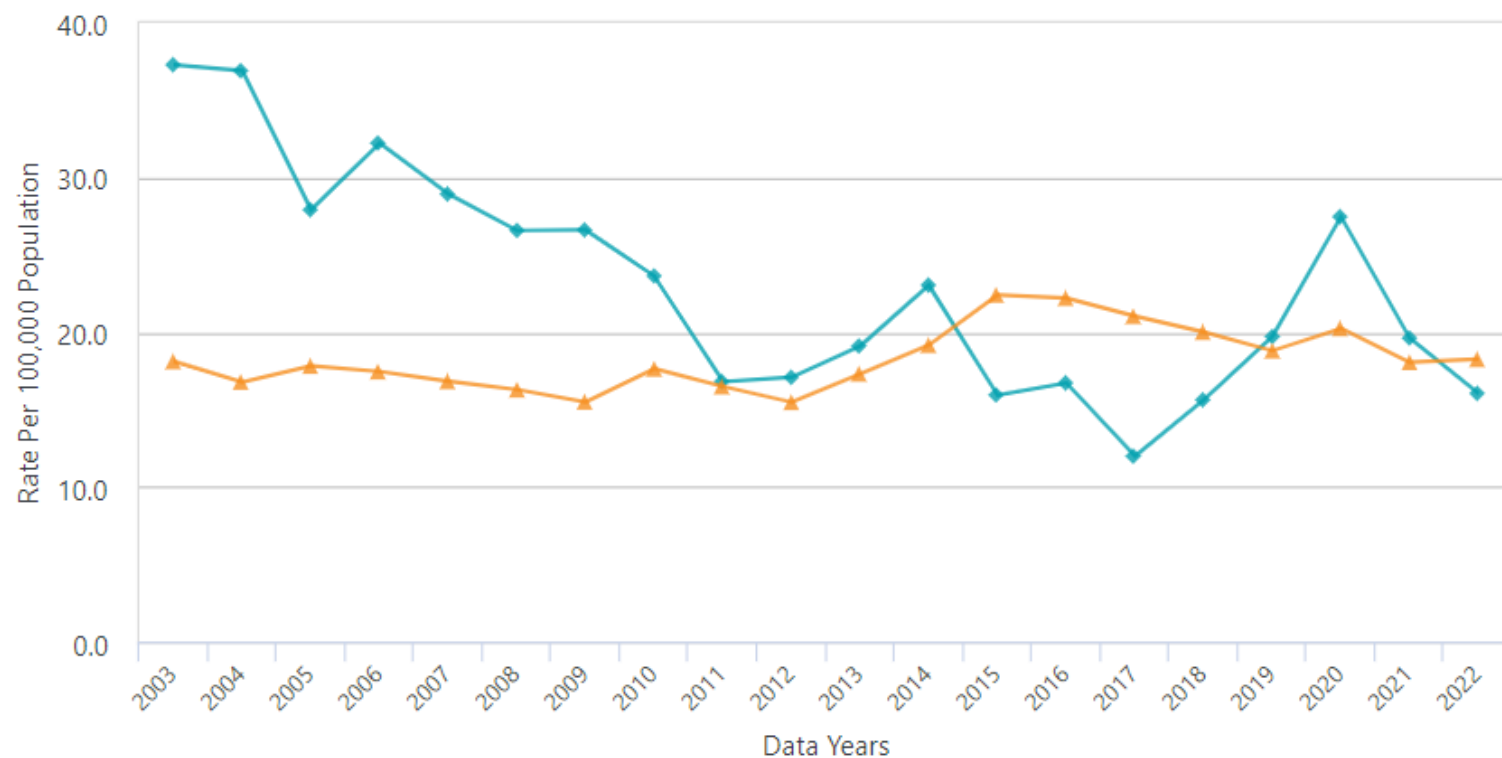


Trend Graph Features

1. Export the graph to a PDF to save or print.
2. Show or hide a trend line by clicking the display names below the graph.

Age-adjusted Deaths From Alzheimer's Disease, Single Year

1



2

Alachua Florida

* Click a legend category to hide or show that category.

Trend Data Table Features

Export the table to a PDF to print or save.

Export the table to Excel.

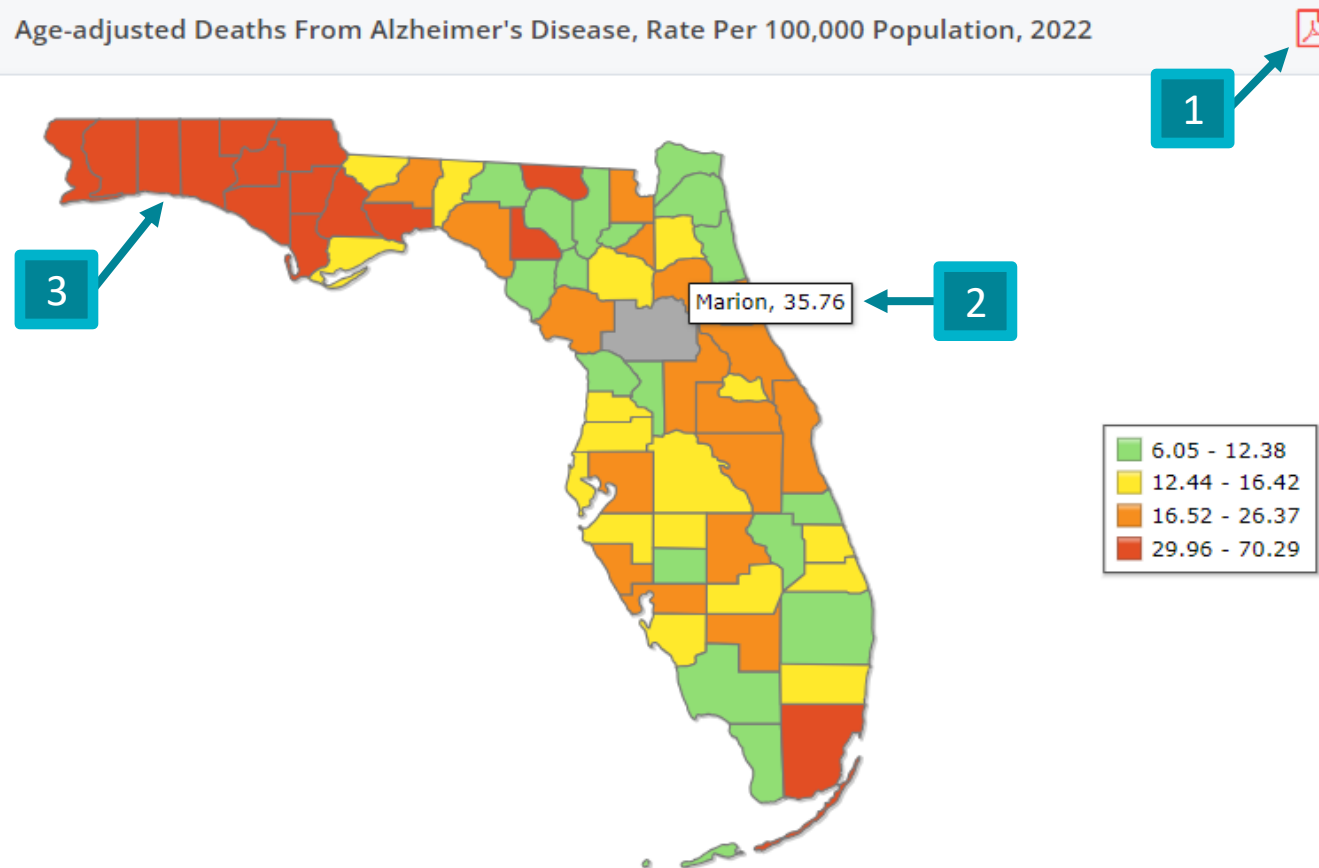
Age-adjusted Deaths From Alzheimer's Disease, Rate Per 100,000 Population, Single Year

Data Year	Alachua		Florida	
	Count	Rate	Count	Rate
2022	48	16.1	6,397	18.3
2021			6,707	18.1
2020			7,264	20.3
2019			6,531	18.8
2018			6,711	20.0
2017	32	12.0	6,956	21.0
2016	41	16.7	7,152	22.2
2015	40	15.9	7,021	22.4
2014	55	23.1	5,814	19.2
2013	47	19.1	5,064	17.3
2012	38	17.1	4,379	15.5
2011	39	16.8	4,470	16.5
2010	52	23.6	4,776	17.6
2009	58	26.6	4,613	15.5

Quartile Map Features

1. Export the map to PDF to print or save.
2. Move your mouse over any county to see its numeric value.
3. Areas on the map with the darkest color have the least favorable data (4th quartile), and the areas with the lightest color have the most favorable data (1st quartile).

Age-adjusted Deaths From Alzheimer's Disease, Rate Per 100,000 Population, 2022



* Mouseover map to see county name and value. * Click a legend category to hide or show that category.

Single-Year Data Table Features



MOV displays a graph comparing the measure of variability (MOV) for both county and state rates.

Note: This option is only available when viewing crude rates.




Export the data table to PDF to print or save.

Export the data to Excel.

Deaths From Alzheimer's Disease, Rate Per 100,000 Population, 2022

MOV  

County	Count	Denom	Rate	MOV
Florida	6,397	22,329,178	28.6	0.7
Alachua	48	290,623	16.5*	4.7
Baker	5	29,186	17.1	15.0
Bay	120	180,774	71.9*	12.4
Bradford			25.2	18.6
Brevard			31.4	4.4
Broward			17.1*	1.8
Calhoun	10	13,690	73.0	45.3
Charlotte	114	194,603	58.6*	10.8
Citrus	29	157,828	18.4*	6.7
Clay	33	225,527	14.6*	5.0
Collier	98	390,944	25.1	5.0
Columbia	11	70,444	15.6*	9.2
Miami-Dade	1,120	2,767,962	40.5*	2.4
Desoto	6	34,098	17.6	14.1

Data Notes

See the data source and notes specific to the indicator at the bottom of the page.

Data Source: Florida Department of Health, Bureau of Vital Statistics

ICD-10-CM Code(s):G31

Chart will display if there are at least three years of data.

Multi-year counts are a sum of the selected years, not an average.

Use caution when interpreting rates and ratios based on small numbers of events. Rates and ratios are considered unstable if they are based on fewer than 5 cases or if the denominator (population at risk) is fewer than 20. An erratic trend line illustrates this instability.

Quartiles are calculated when data are available for at least 51 counties.

Rates by race alone, White, Black or Other Race, are without regard to ethnicity and are available starting with 1989. For example, the White rate includes both White Hispanic and White Non-Hispanic populations.

Rates by ethnicity alone, Hispanic and Non-Hispanic, are without regard to race and are available starting with 2004. For example, the Hispanic rate includes all Hispanic populations whether White, Black or Other Race.

Population - Rates are calculated using July 1 population estimates from the Florida Legislature, Office of Economic and Demographic Research which have been allocated by race based on information from the US Bureau of the Census. It is customary to periodically revise population estimates based on new information, such as a census or new mid-course census estimates for prior years. Revising these estimates ensures more accurate accounting of the racial, ethnic, and sex distribution of the population. These changes affect the population data and rates calculated for your community.

When rates are per 100,000 population they are calculated using population estimates provided by the Florida Legislature, Office of Economic and Demographic Research. All age-adjusted rates utilize the Year 2000 Standard Population Proportion.

Changes in cause of death coding occurred in 1999. Consequently, increases or decreases shown in 1999, compared to prior years, may be due to coding changes rather than actual increases or decreases in disease trends.

Starting with 2003 deaths, the sum of the deaths from all counties will not equal the total number of resident deaths due to an unknown county of residence on some records.

MOV - Measure of Variability: Probable range of values resulting from random fluctuations in the number of events. Not calculated when numerator is below 5 or denominator is below 20, or count or rate is suppressed. The MOV is useful for comparing rates to a goal or standard. For example, if the absolute difference between the county rate and the statewide rate is less than the MOV, the county rate is not significantly different from the statewide rate (alpha level = 0.05). When the absolute difference between the county rate and the statewide rate is greater than the MOV, the county rate is significantly different from the statewide rate. MOV should not be used to determine if the rates of two different counties, or the county rates for two different years, are statistically significantly different.

denom - abbreviated for Denominator.

Population estimates are not available for persons whose county of residence is unknown. Given this, the denominator and associated rate are not available.

* - Indicates the county rate is statistically significantly different from the statewide rate.

Deaths are reported based on single underlying cause of death unless stated otherwise.

This is primary, quantitative data.

Resource Links

These links to helpful external resources that relate to the health indicator's topic.

Deaths From Alzheimer's Disease

Death Indicators

Deaths From Alzheimer's Disease

Alzheimer's disease (AD), one form of dementia, is a progressive, degenerative brain disease that affects memory, thinking, and behavior.

Death rates for Alzheimer's disease are increasing, unlike heart disease and cancer death rates that are on the decline. Dementia, including Alzheimer's disease, is the leading cause of death among older people. In 2018, the cost of Alzheimer's may have been \$277 billion. This cost is projected to increase to more than \$1.1 trillion in 2050.

In 2022, the **rate per 100,000 population of Deaths From Alzheimer's Disease (All) in Alachua** County was **16.5** compared to Florida at **28.6**. Since the oldest age at death varies, an ending age of 999 is used to retrieve all records up to and including the oldest age.

The map illustrates county data by quartile. A **quartile** map is presented when there are at least 51 counties with data for this measure.

Resources: [Healthy People 2030](#) | [Other](#)